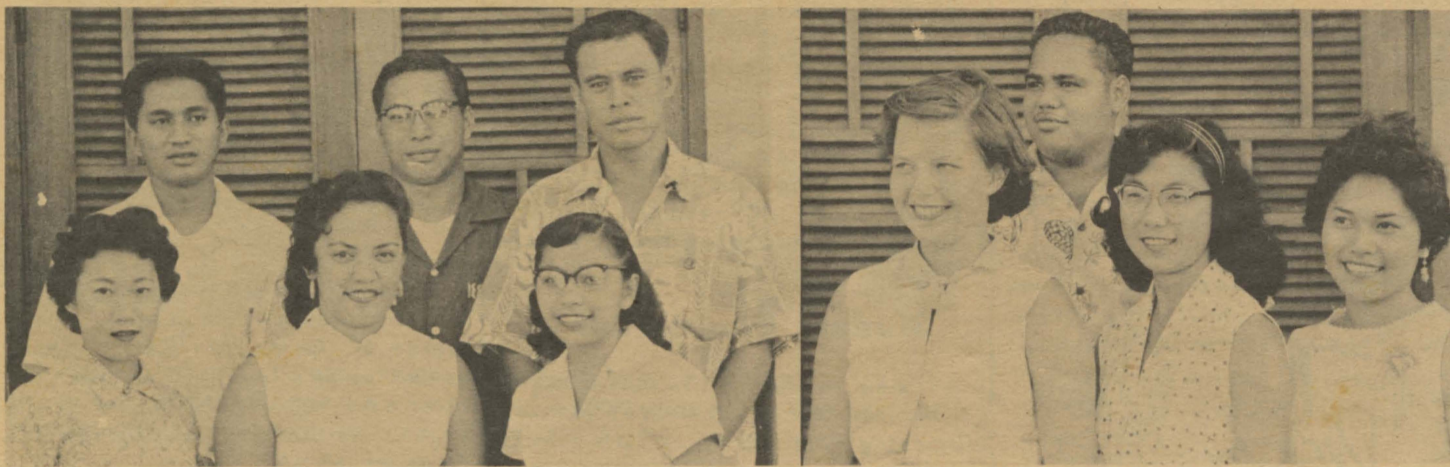
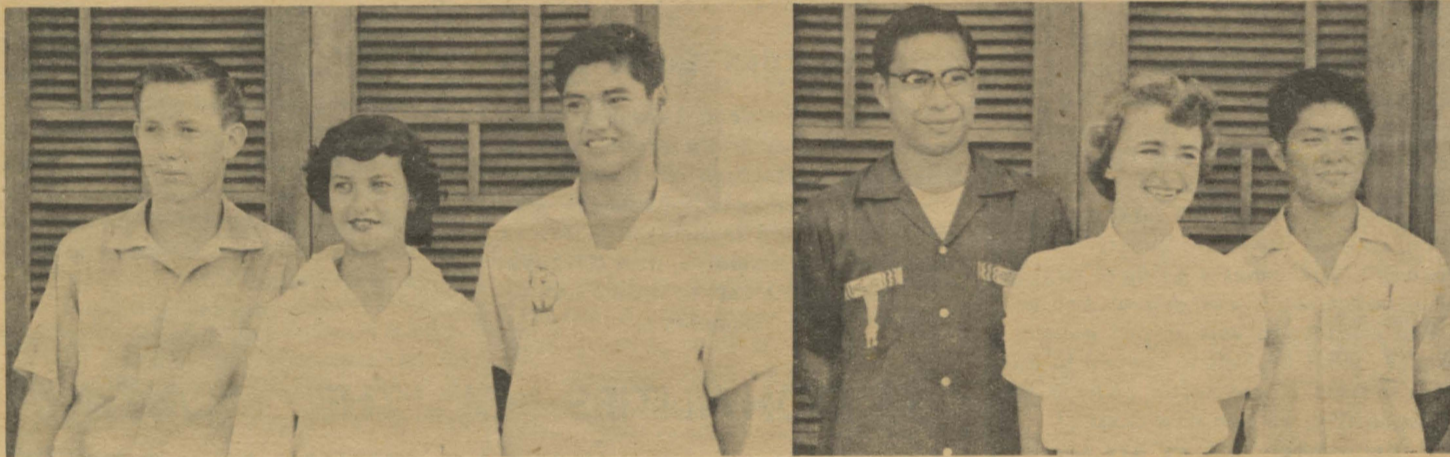


Utah Senator Addresses CCH



Sophomore Legislative Council
Above: Donald Manoa, Clinton Wood and William Montgomery.
Below: Elaine Tsuneda, Elaine Makaio and Sally Takahashi.

Freshman Legislative Council
Above: Henry Simmons
Below: Janeen Brown, Amy Fuchigami and Jacqueline Tanabe.



Freshman Class Officers
l. to r. Lewis Muhlestein, Carolyn McDougall and Tony Magoay.

Sophomore Class Officers
l. to r. Clinton Wood, Gail Pratt and Gary Masuoka.

OFFICERS ELECTED FOR THE YEAR

Montgomery Heads Student Government

William Montgomery of Kauai has been selected by CCH students to serve as their student body president for the current school year. In elections held the first week in October "Monty" defeated Carl Sorenson for CCH's highest office. Gary Masuoka, also from the Garden Isle, was chosen sophomore class president, with Clinton Wood of Honolulu as vice-president. Gail Pratt, a Californian via Honolulu, is soph secretary-treasurer.

The frosh chose Lewis Muhlestein, late of Salem, Utah, as their president, with Tony Magoay of Lanai as veep, and Carolyn McDougall from Kahuluu, this island, as secretary-treasurer.

Legislative council representatives for the sophomore class are Clinton Wood, Elaine Tsuneda, Donald Manoa, Elaine Makaio and Sally Takahashi. Freshmen representatives are Laura Lee Pratt, Jacqueline Tanabe, Amy Fuchigami, Henry Simmons and Janeen Brown.

Mildred Ah Hee was elected secretary-historian of AWS in a by-election.

"CURTAIN CALL" PLAYS MAUI

"Curtain Call for Clifford", this year's premiere presentation of the CCH drama class will leave for the island of Maui December 14 where they are scheduled to present two evening performances on December 14 and 15 at Baldwin and Maui high-schools. The play was well received at its initial performance at the Hukilau Building on November 29 and 30.

The plot consists of a love triangle and lots of excitement. Freshmen and sophomores took part in this comedy under the direction of Woodruff J. Deem.

Members of the cast are Florence Kamauoha (Miss Troutliver), Carl Sorenson (Harry De Wilde), Clara Hokoana (Flooper Bushman), Harry Murray (Biff Reese), Anna Joy Smith (Donna Bratton), David Keala (Andy), Alwin Battad (Clifford Mumford), Jean Pauole (Joyce) and Milton Pa (Sidney).

Others who assisted in the production were: Rowena Mitchell and Maile Ann Enos, cheerleaders; Janeen Brown, prop girl; Sam Sheldon, stage hand; Gail Pratt, prompter; Emilie Kaimi and Odetta Kualau, prop managers; Lily Manuela, make-up; Glen Auna, stage manager and Ruth Okawa, stage director. Nephi Georgi and Norris Deem also rendered their valuable services.

HATS OFF TO THE CAST OF "CURTAIN CALL FOR CLIFFORD!"

Well done, thou good and faithful servant: Thou hast been faithful over a few things, I will make thee ruler over many things.

They also serve who only stand and wait.



FRESHMEN INITIATES

CHOIR PRESENTS CONCERTS

The 75 voices of the Church College of Hawaii Choir will appear in two concerts ushering in the holiday season. The program this year will be in two parts which will bring a wide variety of music of the season to those of the audience.

The first part will consist of selections from George Frederick Handel's immortal "Messiah". Solos will be sung by Roselani Akiona, Edna Ah Nee, Kanani Moikeha and Clara Hokoana, altos; Elizabeth Su'a, Mona Jean Rose, Cecilia Adolpho and Mrs. Richard T. Wootton, sopranos; Kenneth T. Slack, tenor; and Jerry Saranillio, bass.

The second part of the program will feature the choir singing familiar songs and carols of Christmas.

The first performance will be held in the chapel on the campus at 7:30 on Wednesday evening, December 12. The second performance will be a benefit to raise money for The Church College of Hawaii labor mission. It is sponsored by the stake and is to be held in the Tabernacle in Honolulu.

WATKINS LEAVES INSPIRING MESSAGE

Senator Arthur V. Watkins, senior senator from the state of Utah, was scheduled to address a special assembly of the CCH student body yesterday afternoon. His announced subject was "Communism and Christianity". The senator is currently in the islands as a member of the Senate Internal Security Subcommittee investigating communism in the islands.

The Senator, prominent in Utah church affairs and politics, is nationally known for the role he played as the chairman of a special senate committee set up to investigate the censure motion against Wisconsin senator Joseph R. McCarthy two years ago. He is widely respected for his judiciousness and integrity. He earned a special letter of commendation from President Eisenhower for his role in the McCarthy affair.

This is the first time a distinguished political figure has appeared on the campus of Church College.

INITIATION DEEMED SUCCESS

By Carolyn McDougall

Groaning and grumbling could be heard for three days from sorry looking freshmen. The reason--initiation of course! Three days of merciless torture from the sophomores.

During initiation, all freshmen were compelled to do whatever was required of them, and had to follow rules on an agenda sheet made out for them by the sophomore initiation committee. If freshmen did not comply with all the rules and regulations given them, they were penalized.

Sophomores consisting of sheriffs and deputies issued tickets to all disobedient freshmen. This of course, delighted the sophomores. If a freshman saw a sophomore walking up to him with a sly smile, he knew what he was in for.

The freshmen balked and pleaded when first issued tickets, but soon got used to it, and took it in their stride.

Plain, colorless girls with queer-looking beanie, and unshaven, gawky-looking men plodded the campus ditching the sophomores.

Then came the final and most amusing day. The day when all freshmen had to have in their possession at all times, a toothbrush, soap, and a towel. They came to school, looking like clowns in unmatched clothing.

The dreaded evening finally came around. The evening when all penalized freshmen were to be tried by a Kangaroo court consisting of sophomores and a jury. Forms of punishment included smashed eggs on freshmen heads, water-soaking, frogs in packages and many more. Freshmen could be heard screaming and running around Kakela after facing a terrific ordeal of punishment. It was all fun though, and the sophomores will never forget the good sportsmanship displayed by the freshmen during a three-day initiation.

A treasure hunt, bonfire, and a delicious snack of hotdogs, potato salad, and juice was enjoyed by everyone, after the court session.

The freshmen will always remember initiation as one of the most memorable events of the beginning of their college career.

Help Fight TB



Buy Christmas Seals

Publication of the Associated Students of The Church College of Hawaii
Laie, Oahu

Editor..... Eleanor Kaloi
 Associate Editor..... Mae Kunishige
 News Editor..... Carolyn McDougall
 Feature Editor..... Lorene Lum
 Society Editor..... Laura Lee Pratt
 Sports Editors..... Staff
 Photographers..... Bruce Meyers, Donald Manoa
 Reporters..... Florence Kamaouha, Elaine Makaio, Jean Paoule,
 Primrose Nahoolewa, Merlene Jeppsen, Ruth Okawa
 Type Setter..... Ruth Okawa
 Advisor..... Jerry K. Loveland



ARE YOU A GOOD CITIZEN?

Do you ever feel sorry for the enslaved people of communistic countries? Their shoulders are bent with age and hard labor, and their hands are weary. In some, their will to live has died, in others this will to live for freedom burns strongly. Some have never tasted freedom, but they long for freedom so they may live as free people, to vote as free people and to put the leaders of democracy above the leaders of communism.

Yes--we feel sorry for these people, don't we?

Yet isn't it surprising how some of those with the blessings of liberty don't even go to the polls to put the best qualified person in office? They don't care who gets into office. That is the attitude we students at CCH have. "So what if I don't vote." "So what if 'that' person got into office."

Is that what our spirit should be? Are we children that we have to be persuaded and reminded to vote? If we are, let's begin to "grow-up and do our duties."

Do you know that 57% of the

Thanksgiving Devotional

During our regular pre-Thanksgiving devotional assembly held on November 21, Elaine Makaio, Harry Murray, Patrick Dalton and Hugh Woodford gave the students and faculty a short talk on "What Thanksgiving Means to Me".

The talks were very inspiring and the assembly enjoyed them immensely.

After the assembly, a Thanksgiving dinner was served to the students who wished to eat at the cafeteria. The delicious dinner was served and prepared by the dorm mothers.



Pogo says, "Hi, let's all vote in the next election."

Sophomore Class voted for their class officers and 59% of the Freshman Class voted for their class officers? Seventy-seven per cent of the student body members voted for student body president, the Freshman Legislative Council and the Sophomore Legislative Council.

Are we proud of this record? Shouldn't we try to make this a 100% record? Just what's going to happen to us when we leave school and become eligible to vote in our government? What's going to happen to our government if everyone takes the attitude that we are now taking?

Remember that we are not enslaved people, but are free--with certain inalienable rights and privileges. Our democratic government is solid and on a firm foundation. Let's build our school government on the same foundation! We can do this by practicing the principles of democracy--voting is one of them! When we do get an opportunity to cast our votes again in the next election, let's all go out and vote like "CCH-American Citizens."



Richard T. Wootton

Dr. Richard Wootton, Head of the Division of Religion, and Director of Guidance Services, of the Church College of Hawaii, was granted with a doctor's degree this past summer by the University of Utah.

The subject for his thesis was "Religious Orientations of Utah Scientists". With the acceptance of this thesis, he was granted a Doctor of Education degree.

To attain this degree, Dr. Wootton needed three years of experience as a school administrator, and three years of graduate study. He had to acquire a reading knowledge of a foreign language in addition to meeting many other requirements.

God moves in a mysterious way
 His wonders to perform
 He plants his footsteps in the sea
 And rides upon the storm.

William Couper

College Choir Sings at Oahu Stake Conference

The CCH choir, under the direction of Mr. Joseph Spurrier sang at the Quarterly Conference of the Oahu Stake, on Sunday, November 11, at the Honolulu Tabernacle. They sang four numbers at both the morning and afternoon sessions. Following the opening prayer "Hallelujah" was sung, as the first number. The morning session ended with the singing of "Holy Art Thou."

During the afternoon session, the choir sang, "Holy, Holy, Holy, Lord God Almighty." Cecelia Adolpho, Elaine Avelino, Mona Jeanne Rose and Elizabeth Su'a sang as soloists. "And the Glory" was the final number which closed the afternoon session.

Student Contributions

As a result of a fire that ravaged a home in this community on Monday morning, October 29, a Laie family suffered a great loss. However, your contributions, which netted \$15, are helping them to get re-established.

Your student officers thank you for your wonderful response.

Eleanor Kaloi
 Secretary-treasurer, ASCCH

Student Runs Book Store

Jeannette Kochi, capable, young business major and a sophomore at The Church College of Hawaii has charge of the campus bookstore. Her office hours are from 2:00 P.M. on Mondays, Wednesdays, and Fridays, and from 1:00 P.M. to 3:00 P.M. on Tuesdays and Thursdays.

PERSONALITIES OF THE MONTH

Mrs. Mary Robbins

Mrs. Mary Robbins, Head of the Division of Home Living, arrived on the campus of the Church College of Hawaii on September 16, 1956 to replace Mrs. Genevieve Bowman.

Mrs. Robbins comes from Brigham City, Utah.

She has attended the old Brigham Young College, the University of Utah, and the Utah Agricultural College. She now has a Bachelor of Science degree.

Before coming here to the Church College of Hawaii to teach, she taught at the Box Elder High School in Brigham City, Utah.

During her spare time, Mrs. Robbins does some sewing. When she is at home, she spends her spare time with her grandchildren.

Mrs. Robbins believes that more students should be enrolled in the Home Living courses because it will be a necessity in our near future.

Mrs. Robbins is much impressed with Hawaii and she hopes to visit all the Islands before her year at CCH is up.

Lewis Muhlestein

Coming from Spanish Fork High School in Salem, Utah, is Lewis Muhlestein, the Freshman Class President. He arrived in the islands on May 30 this year. At present his parents are on a labor mission here in Laie.

The Hawaiian climate and the friendly people are the first things that caught Lewis' attention. He finds the climate very enchanting and the many races of people fascinating.

Lewis' hobby is farming and raising prize beef. He loves the ocean and the beach although swimming isn't one of his hobbies.

Lewis plans to attend the Church College of Hawaii for two years and then continue his education at the Brigham Young University. He is majoring in physical science.

When asked how he liked Hawaii, and CCH, he said, "I like it!"

FRIENDLY PERSUASION

A cordial invitation is being extended to the entire student body of The Church College of Hawaii to write in to the Editor of the Ke Ala Ka'i. Your letters should include discussions on thought provoking subjects, questions about school life, and articles of interest with which you are in agreement or disagreement regarding school life and activities. This column will appear as a regular feature in each issue, and we will try to help you in every way we can. Please affix your signature to your letters as we will not print unsigned letters. Your name will not appear in the issue unless you so desire.

Dear Editor:

Don't you think that there should be circulated on this campus, more issues of the Ke Ala Ka'i? There seems to be a long gap between the first and succeeding issues of the paper. Is there something you can do about it?

Sincerely,
 An interested student

Dear Interested Student:

In answer to your letter regarding the circulation of the student paper, I would like to say this: Everybody wants a newspaper, but nobody wants to work on it. If you and everyone else who is interested in receiving the Ke Ala Ka'i more frequently would join the staff, we would be better able to have more issues of the student paper circulated throughout the entire school year. Your help is more than welcome.

Sincerely,
 The Editor

Anna Joy Smith

Have you ever thought of traveling over the great, calm, Pacific Ocean? Well, The Church College of Hawaii has a student who comes all the way from Lami Suva, Fiji.

Born on April 30, 1938, Anna Joy Smith is the third child in a family of seven. A mixture of Tongan and English, she is the only child that resembles her father's features.

Having been granted permission from her British officials, she left the beautiful harbor of Lami Suva, Fiji on the ship Oronsay. Six days later she arrived in our Honolulu harbor.

Anna Joy comes from a traveling family, and travel is her greatest passion. She not only plans to tour the islands, but the world as well. Her eldest brother is now completing a mission for the L.D.S. Church in Samoa. She has an older sister in Australia who is married and a younger sister who plans to further her education in nursing in Australia. At home with her parents are two brothers and a baby sister.

Stamp collecting and pen pals have been her hobbies and she has a find talent for playing the guitar. Her knowledge of languages includes Tongan, Fijian and the Queen's English.

When asked the question, "How do you like Hawaii?", she answered, "So far, so good." As for the kids here, she loves them as well as CCH, although she often gets homesick for her native island.

Oh, why don't you work like other men do?

How the hell can I work
 When there's no work to do?

Hallelujah, I'm a Bum
 Anonymous

True humor springs not more from the head than from the heart; it is not contempt, its essence is love; it issues not in laughter, but in still smiles, which lie far deeper.

Thomas Carlyle

A.W.S. NEWS



Members helping themselves to refreshments at AWS reception are: 1. to r. Pualani Kanakaole, Judy Ching, Betty Lou Ching and Carolyn McDougall. Hostesses are Joyce Baysa and Elaine Tsuneda.

Reception..

In the peaceful serenity of the chapel lanai, the Associated Women Students held a get-acquainted reception the afternoon of September 25.

Greeting Big and Little Sisters in the reception line were president Lucy Burke, vice-president Kanani Moikeha, Jean Pauole, immediate past-president of A. W. S. and faculty wives Mrs. Leda Law and Mrs. Dora Jeppsen. Also at the reception were Dr. Reuben Law, President of Church College, Professor Wylie Swapp, faculty coordinator of student activities and Mrs. Mary Robbins, A. W. S. Advisor, as well as many faculty wives.

Arrangements for the reception were made by Kanani, with Joyce Baysa, Jean Pauole, Elaine Tsuneda and Jeanette Kochi helping behind the scenes.

Refreshments of cookies and punch, made by Mrs. Piilani Needham, were served to one hundred people.

According to the record

One year ago September, the Church College of Hawaii officially opened its doors to students from all of the Hawaiian Islands and the Mainland. President of the College was Dr. Reuben D. Law from Brigham Young University Edward L. Clissold, president of Oahu Stake, was President of the Board of Trustees, and there were twenty men and women on the faculty.

The constitution of ASCCH was ratified on November 23, 1955, and on December 9, 1955, the first elections at Church College were held. Victorious candidates were Donald Manoa, President; Clinton Wood, Vice-president; Edith Kahoilua, secretary-treasurer; and Eleanor Kaloi, secretary-historian. Elected as officers of the Associated Men Students were President, Wilbert Kaimikaua; Vice-president, Gary Masuoka, and secretary, Edwin Oshima. Similar officers in the Associated Women Students were held by Jean Pauole, Lauae Long, and Jeanette Kochi.

Cheerleaders were also chosen, with Glen Auna as Yell King, and Pualani Kanakaole, Elaine Makaio, Jackie Tashiro and Alice Ah Lee Sam as the other members of the pep squad.

The elected Legislative Council consisted of freshmen Roselani Aina, John Jensen, Merlene Jeppsen, Joseph Kahounaele, Rowena Knell, Fortunato Macadangang, and Kent Robertson, and sophomores Marjorie Uyeda and Annie Akau

Meeting..

The Associated Women Students held their first meeting of the year on October 18.

Taking the place of Lucy Burke, who was unable to attend, was Kanani Moikeha. Kanani introduced the A. W. S. officers who are Lucy Burke, President; Kanani, Vice-president; and Mildred Ah Hee, Secretary-treasurer. Also introduced were Jean Pauole, immediate past President, Jeanette Kochi, past Secretary-treasurer, and Mrs. Mary Robbins who is acting A. W. S. advisor.

Mildred read the constitution, which was written and approved last year. The membership felt that the A. W. S. president should be a regular voting member of the Executive Council of ASCCH.

Congregational singing was led by Elizabeth Su'a with Theresa Kalamas as the organist.

To the Social Committee

by Laura Lee Pratt

Orchids to the Social Committee for the terrific socials which we've had this year. The Committee has been on the "ball" from the very first week of school when they started the "social ball" whirling with the Welcome Dance. Since then they have barely caught their collective breaths before it was Friday again and time for another party. The second week we had a movie at Lanihuli, and although the mosquitoes drove us nuts, the food and company were delightful, and a good time was enjoyed by all.

Maybe the sophomore's enjoyed the initiation, but it's debatable whether or not everyone did, so let's just mention the evening at Kakela where the sophomore class provided "entertainment" of eggs and toads, and the social committee prepared refreshments which were served around the campfire at the beach. After the "hue and cry" of initiation, the committee "took it easy" the next week, and showed the movie "South Sea Woman."

When Aloha Week came along they celebrated the occasion by sponsoring an Aloha Ball at the recreation hall. The dance was climaxed in intermission by the presentation of Queen Kanani Moikeha and King Bill Montgomery in old Hawaiian fashion. The program was appropriate for Aloha Week with Odetta Kulaau and Marjorie Kauhane dancing to the accompaniment of Clara Hokoana, and Henry Simmons playing on the auto harp. Credit for the planning goes to Gail Pratt, with program by Elaine Makaio, decorations by Lanihuli, and refreshments and clean-up by Laniloa and Kakela.

KAMAAINA RETURNS

Seen wandering around the campus on Tuesday, October 30, was a tall fellow with blonde hair, blue eyes, and a gang of CCH students with him wherever he went. The new students won't remember him, but the sophomores should recognize Bob Bowman as a kamaaina who was Most Preferred Man at last year's Preference Ball. He attended CCH for the first two quarters last year. After leaving Church College, Bob attended Weber College in Ogden, Utah, for a quarter then worked all summer to finance a Mission. He was here on the way to the South Australian Mission on the Orcades with twenty-four other Elders also on their way to Mission Fields in the South Pacific.

Bob reported that the thing he missed most about Hawaii was the Hawaiian music and dancing. He left with our best Aloha and a list of Professor Woodford's friends to be sure to look up!

SIGMA TAU SIGMA

The Sigma Tau Sigma held its first meeting on November 1, 1956. At this meeting the events for the quarter were outlined. It will be the policy of the society to have one business meeting a quarter, and two meetings of a varied nature including lectures, demonstrations, movies, etc.

The following were appointed to serve as Committee Chairmen for the year: Social, Evelyn Jean Pauole; Finance, Merlene Jeppsen; Publicity, Mildred Ah Hee; and Journal, Eleanor Kaloi.

Prior to the first meeting new members were accepted into the organization at a Devotional Assembly on October 30, 1956. There were three provisional members: Bruce Meyers, Marilyn Yamasaki, and Evelyn Jean Pauole; three regular members: Eleanor Kaloi, Walter Kiilau, and Elaine Tsuneda.

On November 13-16, the Society sponsored a project to stimulate interest in the organization of clubs on The Church College of Hawaii campus. Chairman for the event was Bruce Meyers and committee members were Eleanor Kaloi, Mildred Ah Hee, Jeanette Kochi, and Elaine Tsuneda.

An Installation Social for the Society will be held sometime in December.

On November 2 the first crab hunt of the year was held at Kakela beach. The party was planned by Verna Kay Kalanui, and may be added to the list of good times at The Church College.

If you see Glen Auna, Gail, Verna Kay, Joyce Baysa or Florence Kamaouha on the campus, tell them thanks, for they are the Committee and they do the work

DORM NEWS

new officers

The three dormitories settled down to business as soon as school started, and elected officers to guide them through the first quarter.

At Laniloa, Elaine Makaio, a sophomore from Hilo, will carry the presidential banner; with Gail Pratt, a sophomore recently from California as vice-president and social chairman; Amy Fuchigami, a freshman from Lanai as secretary-treasurer, and Sally Takahashi, sophomore from Halaula, Hawaii as chaplain.

The "Big Wheels" at Kakela are Robert Nakagawa, a Honolulu sophomore, president; Carl Sorenson, freshman from Kaneohe, vice-president; Brian Wright, freshman from Honolulu, secretary-treasurer, and Glen Auna, sophomore from Honokaa as social representative.

At Lanihuli you will find Rose-lani Akiona, from Lahaina as president; Maile Ann Enos, freshman from Wailuku, Maui as vice-president; Elaine Tsuneda, Waialua, Oahu, sophomore taking the notes and collecting the money, and Joyce Baysa from Hilo representing Lanihuli on the social committee.



"Haole makes good." Laura Lee Pratt showing her empty poi bowl to Elaine Makaio at Kakela birthday party.

birthday party

The dormitories held their first get together on October 18 at Kakela. The reason for this was to honor all boarding students who had birthdays in September and October. There was good food and good times for all. The dinner of lomi lomi salmon, lau lau, luau chicken and poi was prepared by the dorm mothers. Carl Sorenson acted as master of ceremonies for the short program which included songs by all of the dormitories, and recreational singing led by Elaine Makaio. As the boys have moved to a new dorm, it was the first and last chance for all boarding students to get together at Kakela.



"Swing your partners!" This gang of people having a good time at the square dance assembly are: 1. to r. Russell Carr, Audrey Thompson, Milton Keonini, Rowena Mitchell, Professor Georgi, Verna Kay Kalanui, Janice Thomas and Emilie Kaimi.

JAYVEES INVADE CCH FOR CAGE TILT

Laie Aces Cop First Round Robin

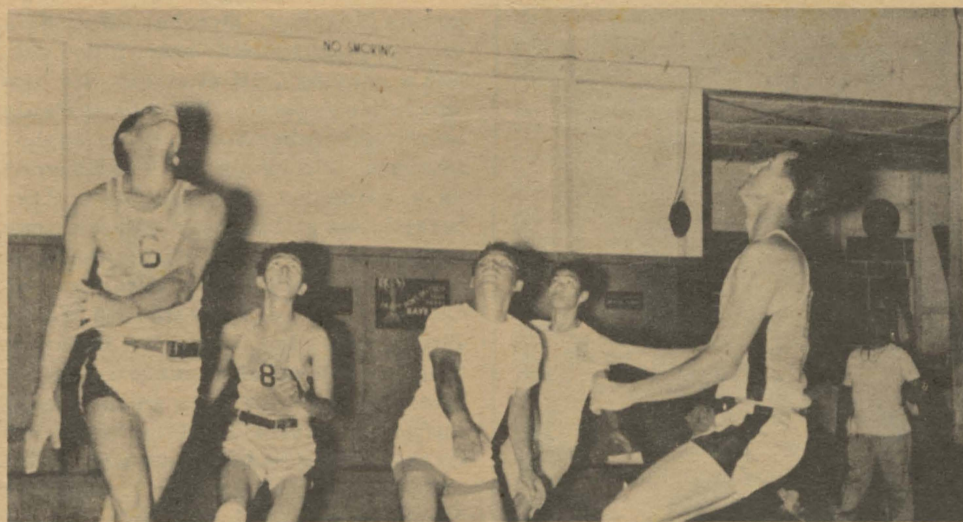
The Laie II Aces copped the first round Girls Intramural Volleyball Championship on November 28, by defeating the Laniloa Eleus by scores of 8-0, 12-15 and 15-6. Top scorer for the team was Angeline Hoopai, who was given wholesome support by team members Yvonne Meatoga, captain; Rosaline De Guzman, coach; Viola Kelii, manager; Thelma Hiram, Maydel Kawahigashi, Laverna Kamae, Cleo Ann Fanene, Cecilia Adolpho, Janice Thomas and Merren Au.

Placing second in the tournament were the Lanihuli Aliis, who downed Hauula by scoring 8-0 in the two remaining sets after being beaten in the first set by a score of 16-15. Pualani Kanakaole, Aileen Bobo and Kanani Moikeha captain, coach and manager respectively. The team members are Elizabeth Su'a, Mona Jeanne Rose, Carol Flores, Theresa Kalama, Maile Ann Enos, Charlotte Dias, Elizabeth Kaleo and Maizie Chun.

Providing strong competition for the two top teams were the Laniloa Eleus and Hauula. Captain of the Eleus Emilie Kaimi was assisted by Elaine Makaio, coach and Mae Kuni-shege, manager. Team members are Clara Hokoana, Clara Loo, Mildred Aina, Laura Lee Pratt, Odetta Kualaa, Eliza Allen, Adeline Lee, Janeen Brown and Gail Pratt.

Representing Hauula were Marjory Kauhane, captain; Susan Chang, coach; Inez Okawa, manager; Verna Kalanui, Anna Magalei, Elaine Avelino, Anna Joy Smith and Masae Sakamoto.

The Physical Education majors Joyce Baysa, June Mendiola, Aileen Bobo and Marlyn Burke are currently working on the second round intramural volleyball schedule under the close supervision of Mrs. Ethel Almadova, girls Physical Education instructor.



Our Basketball Boys in Action
Donald Kalama, Kenneth Fuchigami, David Almadova.

CCH WAXES ST. JOHN'S BY THE SEA

In the first off-campus athletic contest in the history of CCH, the cager combination forged by the Condie Young duo completely out-classed St. Johns-by-the-Sea at Waimanalo November 28. The score of this interesting little basketball seminar was 65-24.

The coaches swept the beach before the game was even well under way. The starting line-up included Donald Kalama, Kenneth Fuchigami, Wendell Kekauoha, Dave Almadova and Harry Murray. Almadova was high point man with 14 points.

The team showed class even though they hardly worked up a good sweat. It is expected that they will encounter stiffer opposition in a game scheduled for Wednesday evening before publication time at Tripler and with the JayVees from across the island this evening at Kahuku.

Reading maketh a full man, conference a ready man, and writing an exact man.
Francis Bacon

Schedule Of Games

| Date | Opponent | Place |
|--------|--------------------|----------|
| Dec. 8 | UH JayVees | Kahuku |
| 13 | Kaneohe Police | Kahuku |
| 14 | Maunaolu College | Maui |
| 15 | Maui Tech. Sch. | Maui |
| 20 | UH Hilo Branch | Kahuku |
| Jan. 4 | Terr. Hosp. Medics | Kahuku |
| 9 | Open | away |
| 12 | UH JayVees | Kahuku |
| 19 | UH Hilo Branch | Hilo |
| 20 | UH Hilo Branch | Hilo |
| 22 | UH JayVees | Honolulu |
| 26 | UH JayVees | Honolulu |
| 30 | UH Jayvees | Honolulu |

The CCH Cagers will meet the UH Jayvees on December 8, 1956 at the Kahuku Gym. This game is slated to start at 7:30 p. m.

Playing at their home court, the CCH Cagers will be showing a lot of action and confidence in themselves. Students and faculty, as well as the community will be able to see our boys in action.

We urge everyone to come out to support our team and cheer for them.

Coach Bill Young and assistant coach Frank Condie are keeping the basketball boys busy these days now that the basketball season has started.

The boys have been undergoing rigid training since October 22, and they will continue this training until the end of the season.

They have been working out plays on the blackboard as well as on the court. They have been looking at films of college basketball games and working out calisthenics in addition to doing laps around the court and scrimmaging.

These hard-working boys are Stanley Alapa, David Almadova, Russell Carr, Frank Chang, Gerald Ching, Arthur Enos, Kenneth Fuchigami, Donald Kalama, Wendall Kekauoha, Juan Magoay, Bruce Meyers, Harry Murray, Robert Nakagawa, Samuel Sheldon and Tommy Patten. The managers are Glen Auna and Gary Masuoka.



Freshmen and sophomore boys preparing for action on the line of scrimmage.



Laniloa girls render a song: "We are the Girls from Laniloa".

Aloha Week Festivities

Aloha shirts, tutu mumus, holokus, aloha print dresses and matching outfits were worn by the students and faculty of the Church College of Hawaii during Aloha Week, October 21-26. On October 25, a student program was given to commemorate the days of old Hawaii.

Lanihuli dormitory presented a typical Hawaiian fashion show entitled "Cross Roads of the Pacific", with Charlotte Dias as narrator. The hula skirt, which is the favorite costume of all, was modeled by Maile Ann Enos, the pahu by Pualani Kanakaole, and the kekiapa by Jacqueline Tanabe. The tutu muu, pake mumu, butterfly muu, and holomuu were modeled by Carolyn McDougall, Elaine Tsuneda, Roselani Akiona, and Eleanor Kaloi, respectively. Lovely sundresses were modeled by Mary Nahulu, Carol Flores, and Betty Lou Ching. The latest creation of all was the tea-timer modeled by

Primrose Nahoolewa. The holoku was modeled by Elizabeth Kaleo and the fashion show ended with Elizabeth Su'a doing the hula "Manu-oo".

Odetta Kualaa and Clara Hokoana began the Laniloa program by doing a musical duet titled "Kaulana Na Pua" followed by a hula by Elaine Makaio and Emilie Kaimi. Their program ended with the Laniloa girls singing a song of their own composition concerning things done in their dormitory.

Henry Simmons played a Hawaiian number on the auto harp to start off the program for the Kakela dormitory. He was followed by the Hilo group Bruce Meyers, Bill Kanakaole, and Alexander Kua singing "Hilo, My Hometown". The Kauai group William Montgomery, Sam Sheldon, Gary Masuoka, Alwin Battad, Lloyd Ishii, and Walter Kiilau sang "Mai Kai Wale No Kauai."

The student body sang "Hawaii Ponoii" to conclude our Aloha Week program.

FRESHMEN TROUNCE SOPHOMORES 14-12

On October 19, the Freshmen Class boys and the Sophomore Class boys clashed together in a game of football for the football intramurals. The Freshmen boys won with a score of 14-12.

The freshmen were captained by Shingi Shishido and Karl Teshima, while the sophomores were captained by William Kanakaole and Wilbert Tai Hook. Faculty members Nephi Georgi, Bill Young and Patrick Dalton refereed the game.

It was an action-filled game with the freshmen and sophomores showing lots of spirit and fine sportsmanship. Both teams were about evenly matched in strength.

The game was greatly enjoyed by the students and faculty, as well as the players.

Wanted:YOU

The Church College of Hawaii will be producing its second yearbook this year under the fine management of Editor, Merlene Jeppsen. Merlene wants to put out a beautiful annual for the students and faculty but she cannot do it alone. She needs the help of all you fine students to help her produce it.

So come and join the yearbook staff. Positions are open for: Associate Editor, Business Manager, and Layout.

Let's not cripple our yearbook by hiding our talents from it. Let's give all we have to make this year-one of which we can be proud.



Frosh Cheers Boys to Victory.

With pep and spirit, the freshmen girls cheered their boys to victory at the freshmen-sophomore football game.

The mighty cheering squad was led by two capable cheerleaders, Maile Ann Enos and Rowena Mitchell.

Athletic Council Chosen

Student body President, William Montgomery appointed Samuel Sheldon and June Mendiola to serve as student representatives on the Athletic Council. The faculty members of this council are Patrick Dalton, Chairman, Dr. Reuben D. Law, Coach Bill Young, Frank Condie and Jerry Loveland.

How troublesome is day!
It calls us from our sleep away
It kids us from our pleasant dreams
awake,
And sends us forth to keep or break
Our promise to pay.
Thomas Love Peacock